

Funding is provided through the project for the Yass Landcare and Community Nursery to provide some of the tubestock for project plantings which is a great way to support local efforts to rehabilitate environmental hotspots in the region.

If you are interested in becoming part of Yass Habitat Linkages funding is still available for fencing, tree planting and direct seeding. You will be joining 35 landholders and a supportive community of people keen to create corridors of native vegetation by fencing remnant vegetation and restoring riparian areas.

For further information, contact us:

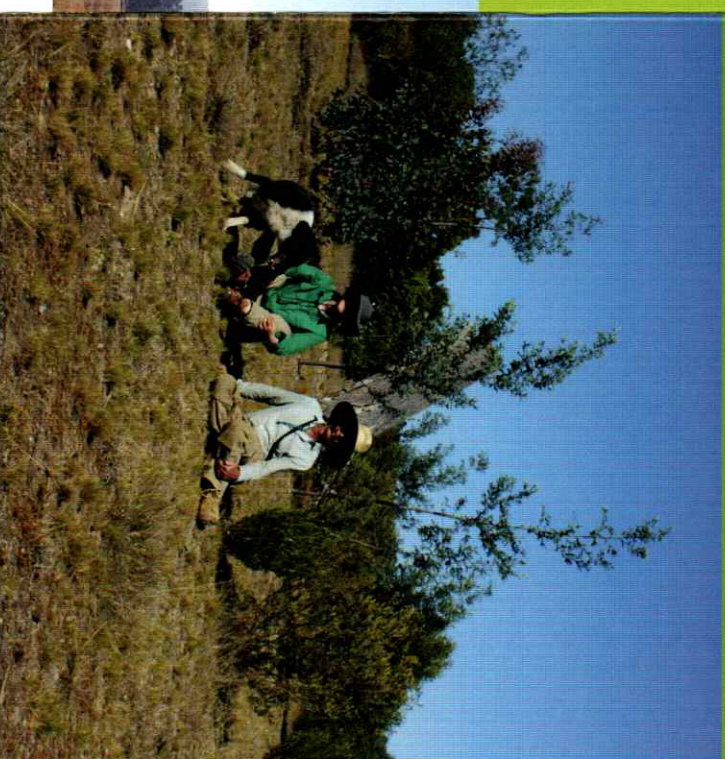
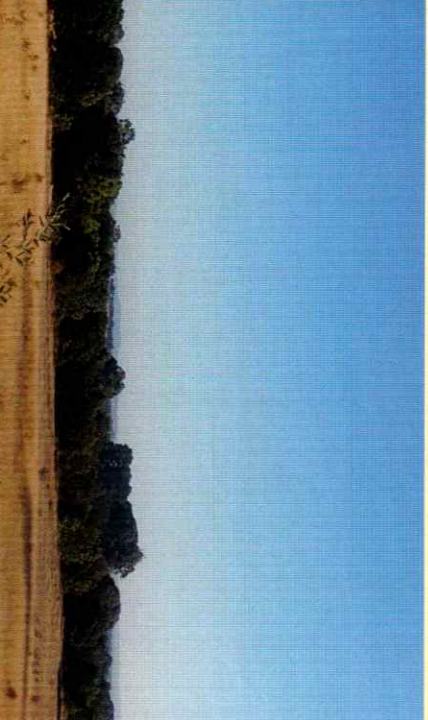
Greening Australia

Ben Hanrahan - 02 6129 5400

Yass Area Network Landcare Group

www.yan.org.au

Yass Habitat Linkages is a ten year project funded by the NSW Environmental Trust through a partnership between the Yass Area Network of Landcare Groups and Greening Australia. The Australian River Restoration Centre, Land for Wildlife and South-east Local Land Services are also supporters of the project.



BUSH CONNECT PROGRAM

Yass Habitat Linkages

On-ground action increasing productivity and biodiversity benefits.

Case Study: 'Arunda', Gunning

Sue Mackenzie and Don Thomas (pictured above) have been working on restoring their property 'Arunda' near Gunning for the past decade. Degraded paddocks with compacted soils, no shelter and low pasture productivity, motivated them to start restoring their landscape to improve agricultural and environmental outcomes.



Greening Australia



Over the years they have tried many methods of tree planting, including tubestock and direct seeding. They found that really good results came from direct seeding, with the seeds coming up when conditions are optimal, and remaining viable many years after it was sown. The success of using direct seeding for revegetation works during 2008 (western part of the property) and 2012 (middle of the property, seen as contours) is shown in the photos below.



Before



After

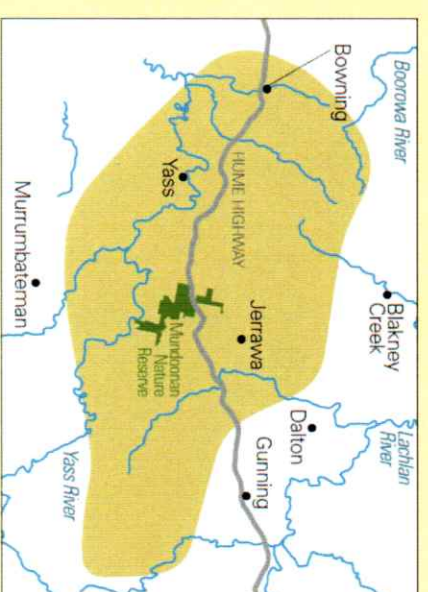
The Eastern half of the property has been direct seeded as part of the Yass Habitat Linkages project in 2017/18. This is still young and will be a few years before it is seen on the photos.

“The direct seeding is vastly superior for our situation.... years after the seeding more trees come up.”

Joining the Yass Habitat Linkages project has allowed Sue and Don to extend their efforts further by linking up a number of separated paddocks with good tree cover. Linking in this way provides a more continuous canopy and ground cover, creating more habitat for wildlife and shelter for stock. This work continues the transformation of ‘Arunda’, with soils gradually getting softer, ground cover becoming more diverse, and numbers of smaller animals like woodland birds and echidnas dramatically increasing.

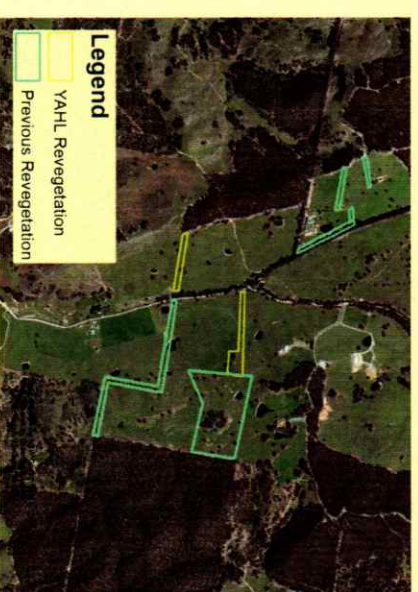


A Rufous Whistler YHL plantings have boosted bird numbers and biodiversity. Photo: G.Fifield



The Yass Habitat Linkages project is managed by the Yass Area Network of Landcare Groups with the on-ground work being undertaken by Greening Australia.

The project area stretches from Bowring and Yass to south of Gunning, and from Dalton to the Murrumbateman area, with the Murrumbateman Nature Reserve roughly in its centre.



This map shows new neighbours working together to build on existing vegetation works creating linkages and corridors within productive landscapes.